



**BOARD OF EDUCATION OF  
SCHOOL DISTRICT NO. 46 (SUNSHINE COAST)**

**COMMITTEE OF THE WHOLE  
AGENDA**

Tuesday, April 25, 2017 from 9:30 a.m. – 11:00 a.m.  
School Board Office – Gibsons, BC

---

- 1) Trustee Evaluation Process
- 2) Trustee Electoral Area (TEA) Variance
- 3) Communication plan (standing item)



## Identified Areas

In all of these cases, except the District of Sechelt, the Sechelt Band lands are part of the local government area and so are included in the TEA. The District of Sechelt however excludes 6 Band lands (IRs) and these lands are also excluded from the adjoining Regional District Electoral Areas B and D.



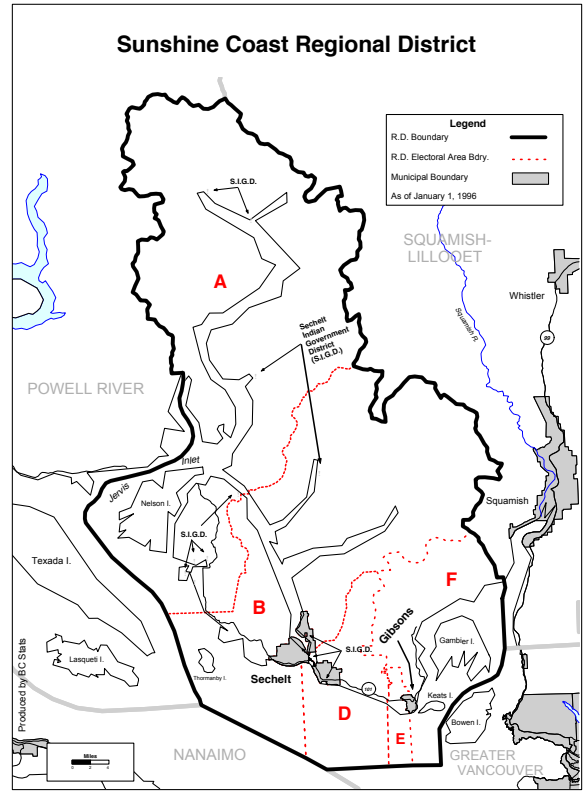
Areas that are not currently included:  
IR 1 Tsawcome, IR 2 Sechelt, IR 3 Swaycalse, IR 4 Oalthkyim, IR 5 Klaalth, and IR 28 Shannon Creek.

## Discussions to date

- April 24, 2016 – Committee of the Whole
- May 24, 2016 – Committee of the Whole
- June 14, 2016 – Regular Board Meeting
- January 24, 2017 – Committee of the Whole
- January 31, 2017 – Special Committee of the Whole
- February 8, 2017 – Regular Board Meeting
  - MOTION:  
“THAT the board proceed with three regional public consultations, taking place during February-April, on the following options: Option A: Listing SIGD lands within the geographic region that borders them, Option B: Including the excluded SIGD lands in the Sechelt TEA and combining Gibsons with Areas D,E & F”

## Current Local Bylaw

#	TEA	Description	# of trustees
1	Gibsons	Town of Gibsons	1
2	Sechelt	District of Sechelt	2
3	Rural Area 1	SCRD Areas A & B	1
4	Rural Area 2	SCRD Areas D, E, F and SIGD	3



## Considerations

Ministry of Education  
Trustee Variation  
Guidelines

Excerpted from the *Trustee Variation Guidelines*:

“A person of board of education must consider the principle of voter parity (representation by population) based on the concept of “one person – one vote”. Any movement away from “one person – one vote” will only be allowed if it is impossible to have relative equality of voting power and change will result in more effective representation”

For the complete document, visit:

[http://www2.gov.bc.ca/assets/gov/education/administration/legislation-policy/legislation/schooltrustee/school\\_trustee\\_election\\_procedures.pdf#page=62](http://www2.gov.bc.ca/assets/gov/education/administration/legislation-policy/legislation/schooltrustee/school_trustee_election_procedures.pdf#page=62)

## Option A

Listing SIGD lands within the geographic region that borders them.

	SD46 Electoral Areas	# of Trustees	2016 Census	Trustee to population ratio
TEA 1	Area A		2624	
	Area B		2726	
	SIGD (HMB & Pender Lands)*		35	
	<b>Rural Area 1</b>	<b>1</b>	<b>5385</b>	<b>1:5385</b>
TEA 2	Sechelt		10216	
	SIGD		636	
	<b>Sechelt</b>	<b>2</b>	<b>10852</b>	<b>1:5426</b>
TEA 3	<b>Gibsons</b>	<b>1</b>	<b>4605</b>	<b>1:4605</b>
TEA 4	Area D		3421	
	Area E		3664	
	Area F		2043	
	<b>Rural Area 2</b>	<b>3</b>	<b>9128</b>	<b>1:3043</b>

*\*Estimated*

## Option B

Including all missing SIGD lands in the Sechelt TEA and combining Gibsons with Areas D,E & F. (SIGD lands in the Pender region included in their geographic region)

	SD46 Electoral Areas	# of Trustees	2016 Census	Trustee to population ratio
TEA 1	Area A		2624	
	Area B		2726	
	SIGD (HMB & Pender Lands)*		35	
	<b>Rural Area 1</b>	<b>1</b>	<b>5385</b>	<b>1:5385</b>
TEA 2	Sechelt		10216	
	SIGD		636	
	<b>Sechelt/SIGD</b>	<b>3</b>	<b>10852</b>	<b>1:3617</b>
TEA 3	Gibsons		4605	
	Area D		3421	
	Area E		3664	
	Area F		2043	
	<b>Rural Area 2</b>	<b>3</b>	<b>13733</b>	<b>1:4578</b>

*\*Estimated*

## Feedback

- Public Consultations:
  - Thurs. Feb. 23 from 6-7 pm at Elphinstone Secondary
  - Tues. Mar. 7 from 6-7 pm at Pender Harbour Secondary
  - Wed. Mar. 29 from 6-7 pm at Chatelech Secondary
- Written input will be received until April 12, 2017 and can be emailed to [nweswick@sd46.bc.ca](mailto:nweswick@sd46.bc.ca)

Under the *School Act*, the Minister of Education makes the final decision regarding trustee electoral areas. Any changes to the trustee electoral areas would be in place prior to the October 2018 election.



# TOWN OF GIBSONS

"The World's Most Liveable  
Town" 2009

Office of the Mayor

**Wayne Rowe**  
Mayor

474 South Fletcher Road  
P.O. Box 340  
Gibsons, B.C. V0N 1V0  
  
info@gibsons.ca  
www.gibsons.ca  
P: 604.886.2274  
F: 604.886.9735

February 22, 2017

Nicholas Weswick, Secretary Treasurer  
School District No. 46  
PO Box 220  
494 South Fletcher Road  
Gibsons, BC V0N 1V0

Dear Nicholas Weswick;

**Reference: Trustee Electoral Area Variance**

---

Thank you for your letter outlining the options the Board of Education, School District No. 46 will be taking to public consultation to address the inclusion of the Sechelt Indian Government District in the Trustee Electoral Areas for the Sunshine Coast.

Council resolved to support your Option B to include all SIGD lands located within the District of Sechelt in the Sechelt Trustee Electoral Area and combining Gibsons with Electoral Areas D: Roberts Creek, E: Elphinstone, and F: West Howe Sound.

I trust this is the information you require at this time and we look forward to the results of the public consultation process.

Yours truly,

**TOWN OF GIBSONS**

Wayne Rowe  
Mayor



## SECHELT INDIAN GOVERNMENT DISTRICT

March 28, 2017

School District No. 46  
Attn: Nicholas Weswick  
Box 220  
Gibsons, BC V0N 1V0

Dear Mr. Weswick:


RE: Trustee Electoral Area Variance

The Sechelt Indian Band referred the February 20, 2017 letter regarding TEA variance to the March 22, 2017 SIGD Council meeting. At the meeting Council voted to send a letter to SD 46 requesting reconsideration of the decision to include SIGD in the Sechelt TEA. Council continues to recommend identifying SIGD lands as a single TEA with an elected trustee and redistributing the number of trustees in other TEAs.

The letter was also distributed to SBL 1, 2, and 19 Advisory Councillors for posting and input from residents in their areas. The Advisory Councillors reported at the March 23, 2017 Advisory Council meeting that residents had no comments to provide.

Yours truly,

  
Councillor Warren Paull

  
Councillor Christopher August

  
Councillor Robert Joe





Message

04/06/2017 10:43 AM

From: **Nicholas Weswick**

Ruth Emerson [REDACTED]

To: **Erica Reimer**

Subject: Fwd: Trustee allocations

Can you add this to the committee agenda as late feedback?

Thanks,

Nicholas Weswick, CPA CGA  
Secretary-Treasurer

[School District No. 46 \(Sunshine Coast\)](#)  
[Lifelong Learning | Educational Excellence](#)

p: 604.886.4484 m: 604.989.5485

[nweswick@sd46.bc.ca](mailto:nweswick@sd46.bc.ca) | [www.sd46.bc.ca](http://www.sd46.bc.ca)

---

The information contained in this e-mail is intended only for the individual or entity to which it was addressed. Its contents (including any attachments) are confidential and may contain privileged information. If you are not an intended recipient you must not use, disclose, disseminate, copy or print its contents. If you receive this e-mail in error, please notify the sender by reply e-mail and delete and destroy the message.

----- Original Message -----

I am hoping that a copy of this email will go to trustees, not just a tick in the box for which option.

First: The first public hearing (which I would have chosen to attend) had come and gone before I even was aware of any public hearings. March 7th I would not have driven to Pender Harbour at that time of night and the third I will be away.

My husband and I looked at the options and wish to support option A. While we did not really like any of the options and liked the possibility of Gibsons being included in rural area 2 breakdowns the numbers in Option B were unfavourable.

Option A offers the best breakdown of representation.

I also want to comment that the division of trustees is based on voting population, not on parents with children in school. As I have stated on numerous occasions, communications with the voting, tax paying public is insufficient.

Also, it is time to look to decreasing the number of trustees from 7 to 5. I realize that trustee numbers was not part of the mandate from the Minister of Education but it would have been a good time to look at this cost saving measure. I hope this will be considered in the future.

I will make my views known to the Minister of Education as the Ministry is the deciding factor.

Thank you.

Ruth and Peter Emerson

## 73 ELECTORAL AREAS BYLAW

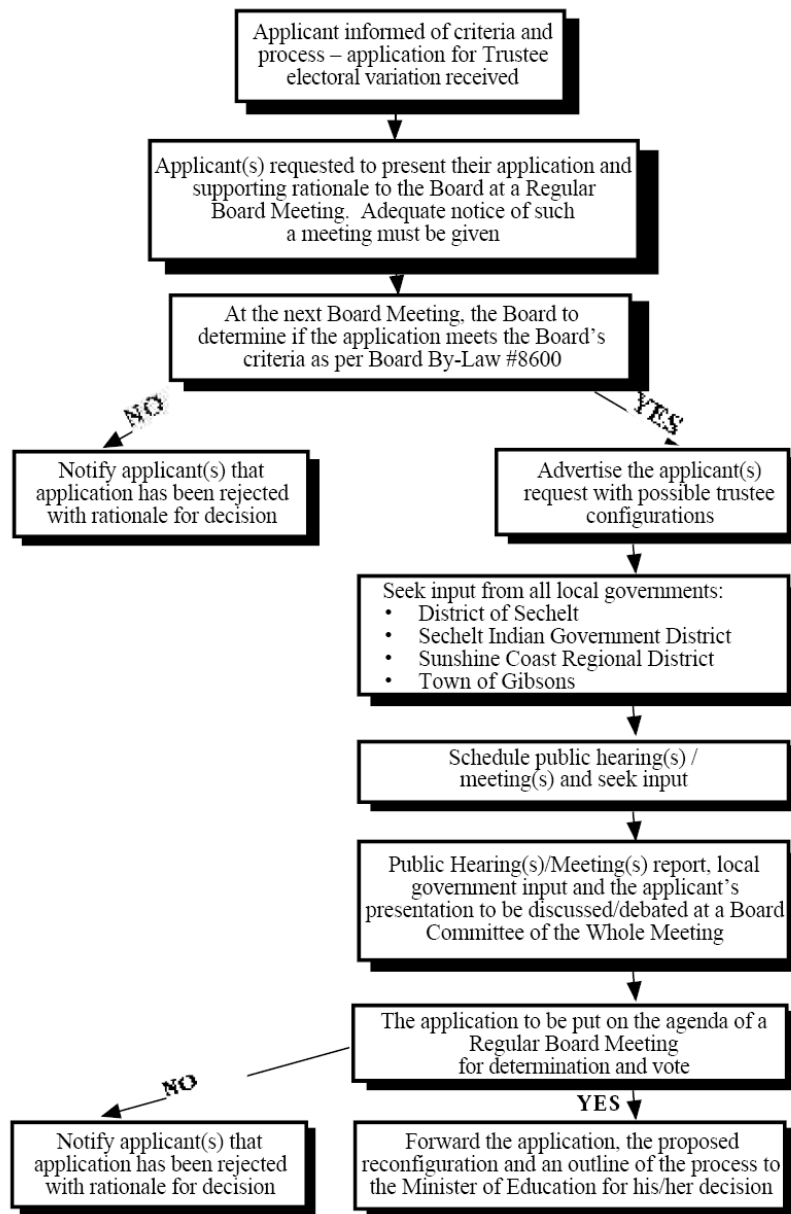
Section 30 of the *School Act* establishes the requirement to have a Board of School Trustees for each school district in the province. Section 30 also sets out the composition of the Board and in general terms provides the manner in which trustee electoral areas are to be established. Under the *School Act* the Minister of Education makes the final decision regarding trustee electoral areas. Residents of School District No. 46 (Sunshine Coast) will be best served by electing school trustees from trustee electoral areas that are fair and reasonable. From time to time local boards may receive requests to vary the trustee electoral areas established for the district. The Board of School Trustees of School District No. 46 (Sunshine Coast) desires to have a process in place to evaluate any such requests for electoral area variances. This process needs to be transparent, fair and reasonable, and applied in a consistent manner.

- 73.1 Prior to seeking public consultation, requests for trustee electoral area variances will be evaluated by the Board against the following criteria of: Relative parity of voting power is a prime condition of effective representation (i.e. representation by population).
- 73.2 Additional criteria are:
- (a) Representation by population balanced by region (i.e. not elected at large).
  - (b) Applicant currently not effectively represented.
  - (c) Positive/neutral impact on governance efficiency/effectiveness/cost.
  - (d) Benefit to school district/students.
  - (e) Similar to other government boundaries/regional/municipal.
  - (f) Regional differences/character/diversity, community and minority differences.
- 73.3 In addition, the Board recognizes there may be requests involving unique circumstances that could support a variance.
- 73.4 The process used shall be as outlined in the attached “**Trustee Electoral Variation Process.**”

### Trustee Electoral Variation Process

[Reference: Regulation 73.4]

#### APPROXIMATELY SIX MONTHS



# Trustee Variation Guidelines

## PROVINCE OF BRITISH COLUMBIA, MINISTRY OF EDUCATION

### Appendix 1.1: Trustee Variation Guidelines

Note: "**person**" in the *Interpretation Act*, includes a corporation, partnership or party, and the personal or other legal representatives of a person to whom the context can apply according to law.

These guidelines provide assistance to persons or boards of education when they wish to vary the numbers of trustees in a school district, or to vary the trustee electoral areas and/or the number of trustees assigned to trustee electoral areas.

A person or board of education must consider the principle of voter parity (representation by population) based on the concept of "one person – one vote". Any movement away from "one person – one vote" will only be allowed if it is impossible to have relative equality of voting power and the change will result in more effective representation.

### Relevant Legislation

Section 30 (4) and (5) of the *School Act*

### Procedures

The following procedure is provided as a guide:

1. A person or a board should have a stated rationale for requesting a variation in the number of trustees in a school district, any trustee electoral areas and/or the number of trustees assigned to trustee electoral areas.
2. The rationale should be brought to public attention and the views of the public obtained, as expressed through some form of public consultation.
3. The views of appropriate, municipal councils, regional boards, First Nations should be solicited as well as the views of other special interest groups.
4. A person or a board should then write a letter to the Minister requesting that, pursuant to section 30 (4) of the *School Act*, the Minister consider making a variation order.

## TRUSTEE VARIATION GUIDELINES - continued

5. The letter should include:

- (a) in respect to a variation of trustee electoral areas
  - i. for the current trustee electoral areas
    - a map which clearly indicates each area (preferably a single map of the complete school district indicating each area)
    - the population of each area;
  - ii. for the proposed trustee electoral areas
    - the name of each area
    - the number of trustees representing each area
    - the metes and bounds description of each area prepared or approved by a certified professional surveyor (in both hard copy and electronic format - Microsoft Word preferred)
    - the population of each trustee electoral area
    - a map which clearly indicates each area (preferably a single map of the complete school district indicating each area);
- (b) the rationale for the changes requested and an indication of the nature of the public discussion that was involved including any discussion with boards of education, municipal councils, regional boards, First Nations or special interest groups (e.g., First Nations);
- (c) if applicable, the date that the board of education, municipality, regional board, etc. passed a resolution to request a trustee variation for the school district and/or for certain trustee electoral areas; and
- (d) a request that, pursuant to section 30 (5) of the *School Act*, the Minister vary the number of trustees in the manner described or vary the electoral areas, or both of these, including any suggestions by the board, municipality, regional board, etc., concerning the manner in which and the times at which any new trustees under the variation order are to be appointed or elected.

6. The Minister will consider the request and, if the request is not from the board of education affected, the Minister will forward the request and the supporting documentation to the affected board of education to give it an opportunity to respond.

7. Once the Minister has received the affected board of education's response in the event that another person is requesting the variation or, if it is only the board that is making the request, the Minister will consider all the documentation presented and will notify all persons making a request as to the decision as soon as is practical.

8. Note that section 30 (5) of the *School Act* states that if the Minister reduces the number of trustees, then the order reducing the number of trustees becomes effective for the following general school election.

### Contact

If you have questions/comments relating to these guidelines, please contact the Governance and Legislation Unit at [educ.governance.legislation@gov.bc.ca](mailto:educ.governance.legislation@gov.bc.ca) or (250) 356-1404.

	AUGUST	SEPTEMBER	OCTOBER	NOVEMBER	DECEMBER	JANUARY
BOARD		<ul style="list-style-type: none"> <li>• DSLT/Trustee Dinner</li> <li>• Financial Statement Approval</li> <li>• BCSTA Provincial Council Motions</li> <li>• Reg 5700 – Rescind</li> <li>• Summer Work Review</li> </ul>	<ul style="list-style-type: none"> <li>• Strat Plan Update: Vision. 1g Outdoor ed, 2d Parent comm,</li> <li>• Student Trustee Appointment</li> <li>• Select Standing Committee on Finance and Govt Services</li> <li>• Enrolment Report</li> </ul>	<ul style="list-style-type: none"> <li>• Strat Plan Update: Mission, 1b Reading, 2b Reading teachers, , 2j sustainable practices</li> <li>• LIF Allocations</li> <li>• Long Range Facilities Plan</li> <li>• Summative Report Cards</li> </ul>	<ul style="list-style-type: none"> <li>• Strat Plan Update: Inclusion 1i Technology, 2e Healthy staff. 2.h. Safe / Healthy Schools (cultural)</li> <li>• Board elections</li> <li>• BCSTA AGM &amp; Provincial Council Motions</li> <li>• BCPSEA AGM Motions</li> <li>• Regs: Student Reporting &amp; Restraint/Seclusion</li> </ul>	<ul style="list-style-type: none"> <li>• Strat Plan Update: Innovation 1a Early Learning, ,</li> <li>• Committee Appointments</li> <li>• Closed: Henry Rd Lease</li> </ul>
C.O.W.		<ul style="list-style-type: none"> <li>• Strat. Plan: Implementation Plan Year 3</li> <li>• Select Standing Committee on Finance and Govt Services (discussion)</li> <li>• Partners in Learning Update</li> <li>• Strat plan: Communication (standing item)</li> </ul>	<ul style="list-style-type: none"> <li>• External Committees Report</li> <li>• Truth and Reconciliation Report</li> <li>• BCSTA Aboriginal Education Committee Questions (BB)</li> <li>• Strat plan: Communication (standing item)</li> </ul>	<ul style="list-style-type: none"> <li>• 2.h. Safe / Healthy Schools (cultural)</li> <li>• Strat plan: Communication (standing item)</li> </ul>	<ul style="list-style-type: none"> <li>• Rural Engagement</li> <li>• School Growth Plans</li> <li>• Strat plan: Communication (standing item)</li> </ul>	<ul style="list-style-type: none"> <li>• Strat Plan: 2a Prof dev</li> <li>• Strat Plan: 3d Govs Visioning</li> <li>• 2017/18 School Calendar</li> <li>• Trustee Electoral Areas</li> <li>• Strat plan: Communication (standing item)</li> </ul>
ED. CTE		<ul style="list-style-type: none"> <li>• Strat. Plan: Student Sustainable Practices &amp; Outdoor Ed</li> <li>• Grad Exit Survey</li> <li>• Curriculum (Standing Item)</li> <li>• Parent Engagement (Standing Item)</li> </ul>	<ul style="list-style-type: none"> <li>• Strat plan: 1B Reading, 2B Reading Teachers</li> <li>• MDI</li> <li>• Curriculum (Standing Item)</li> <li>• Parent Engagement (Standing Item)</li> </ul>	<ul style="list-style-type: none"> <li>• Strat plan: 1i – technology / Tech Plan</li> <li>• Curriculum (Standing Item)</li> <li>• Parent Engagement (Standing Item)</li> </ul>	<ul style="list-style-type: none"> <li>• Strat plan: 1a early learning</li> <li>• Curriculum (Standing Item)</li> <li>• Regulation 3050 –Animals in Schools</li> <li>• Parent Engagement (Standing Item)</li> </ul>	<ul style="list-style-type: none"> <li>• Strat plan: 1 d SEL</li> <li>• Strat plan: 3 b Collaborations</li> <li>• FreshGrade Reflections/Feedback</li> <li>• Curriculum (Standing Item)</li> <li>• Parent Engagement (Standing Item)</li> <li>• Condom Regulation (to be repealed)</li> </ul>
OPS. CTE		<ul style="list-style-type: none"> <li>• Long Range Facilities Plan</li> </ul>	<ul style="list-style-type: none"> <li>• Preliminary Budget Timelines</li> <li>• Strat plan: 2j Sustainable practices</li> <li>• Regulation 4450 (Purchasing)</li> <li>• Joint-Use Agreement</li> </ul>	<ul style="list-style-type: none"> <li>• Strat plan: 2e Healthy staff</li> <li>• Budget</li> </ul>	<ul style="list-style-type: none"> <li>•</li> </ul>	<ul style="list-style-type: none"> <li>• Enrollment Projections</li> <li>• Amended Budget</li> <li>• Preliminary Budget discussion</li> <li>• Tentative transportation review</li> </ul>
POLICY CTE		<ul style="list-style-type: none"> <li>• Conflict of Interest Policy</li> <li>• Appeals Bylaw Review</li> <li>• Local Purchasing</li> </ul>	<ul style="list-style-type: none"> <li>• Trustee Email</li> <li>• Whistleblower Policy (SD83)</li> </ul>	<ul style="list-style-type: none"> <li>• Surplus Policy (SD83)</li> <li>•</li> </ul>	<ul style="list-style-type: none"> <li>•</li> </ul>	<ul style="list-style-type: none"> <li>•</li> </ul>
OTHER	<ul style="list-style-type: none"> <li>• Report to Community</li> <li>• Trustee/Audit Info Session</li> </ul>	<ul style="list-style-type: none"> <li>• BCPSEA Symposium (Oct)</li> </ul>	<ul style="list-style-type: none"> <li>• Ad Hoc Community Celebrations Cmte – Selection Process</li> <li>• Intergovernmental Meeting</li> </ul>	<ul style="list-style-type: none"> <li>• Partners in Learning</li> </ul>	<ul style="list-style-type: none"> <li>• Superintendent Evaluation Committee</li> <li>• Ad Hoc Community Celebrations Cmte – Review</li> <li>• Learning Forward</li> </ul>	<ul style="list-style-type: none"> <li>• School Visits</li> <li>• BCPSEA AGM</li> <li>•</li> </ul>
Consultations			<ul style="list-style-type: none"> <li>• South Coast Branch Meeting</li> </ul>	<ul style="list-style-type: none"> <li>• Preliminary Budget Consultations</li> </ul>	<ul style="list-style-type: none"> <li>• Parent Engagement Consultations</li> </ul>	<ul style="list-style-type: none"> <li>• Preliminary Budget Consultations</li> <li>• Parent Engagement Consultations</li> </ul>

	FEBRUARY	MARCH	APRIL	MAY	JUNE	JULY
BOARD	<ul style="list-style-type: none"> <li>Strat Plan Update: Collaboration 1d SEL, 2a Prof dev., 3b Collaborate &amp; 3D gov's visioning</li> <li>Amended Annual Budget</li> </ul>	<ul style="list-style-type: none"> <li>Strat Plan Update: Equity. 1c Math, 2f Ldrs, 3c Int'l students, 2h Safe/Healthy Schools (operational)</li> <li>2017/18 School Calendar</li> </ul>	<ul style="list-style-type: none"> <li>Strat Plan Update: Respect 1 E Mental/phys health, 3g Cap U</li> <li>Budget – School Allocation Rates</li> <li>BCSTA AGM Motions</li> <li>Closed: <a href="#">PVP Contract Review</a></li> <li>Closed: Trustee Evaluation</li> <li><del>Closed: SGC Decision</del></li> </ul>	<ul style="list-style-type: none"> <li>Strat Plan Update: Responsibility 1f Music, 1k Grad, 2i facilities</li> <li>Grievances Report (closed)</li> <li>Supt. Eval. Report (closed)</li> <li>Budget Approval</li> <li>Annual Facilities Bylaw</li> <li>Trustee Electoral Areas</li> <li>District Report to the Ministry</li> </ul>	<ul style="list-style-type: none"> <li>Strat Plan Update: 1H exper learning/inquiry, 1j indigenous learning, cultures, 3f SIB/Squamish, 2g celebrations,</li> <li>Closed: Superintendent and Senior Staff Contract Review</li> </ul>	
C.O.W.	<ul style="list-style-type: none"> <li>Strat plan: 3c Int'l students</li> <li>Strat plan: Communication (standing item)</li> </ul>	<ul style="list-style-type: none"> <li>Strat plan: Communication (standing item)</li> <li>Election Engagement Campaign</li> </ul>	<ul style="list-style-type: none"> <li>Trustee Electoral Areas</li> <li>Trustee Evaluation Process</li> <li>Strat plan: Communication (standing item)</li> </ul>	<ul style="list-style-type: none"> <li>Strat plan: Communication (standing item)</li> <li>Trustee Variance Process Update</li> </ul>	<ul style="list-style-type: none"> <li>Board / Trustee Evaluation</li> <li>Strat plan: Communication (standing item)</li> <li>Strategic Plan Year Review</li> <li>Cmte meeting timing</li> </ul>	<ul style="list-style-type: none"> <li>Board / Trustee Evaluation</li> <li>Electoral Variance Review (yearly)</li> <li>Review Public Sector Governance – Guide To The Principles Of Good Practice</li> </ul>
ED. CTE	<ul style="list-style-type: none"> <li>Strat plan: 1C Math</li> <li>Strat plan: 2f Ldrs</li> <li>Curriculum (Standing Item)</li> <li>District Report to the Ministry</li> <li>Parent Engagement (Standing Item)</li> </ul>	<ul style="list-style-type: none"> <li>Strat plan: 1e Mental and phys health, 3g Cap U</li> <li>Curriculum (Standing Item)</li> <li>Parent Engagement (Standing Item)</li> </ul>	<ul style="list-style-type: none"> <li>Strat plan: 1F Music, 1k graduation,</li> <li>District Report to the Ministry</li> <li>Curriculum (Standing Item)</li> <li>Parent Engagement (Standing Item)</li> </ul>	<ul style="list-style-type: none"> <li>Strat plan: 1j Indigenous &amp; other cultures, 1H exper learning/inquiry, 3f SIB/Squamish</li> <li>1e Physical Health</li> <li>Parent Engagement (Standing Item)</li> <li><a href="#">Museum School (G. Kydd)</a></li> </ul>	<ul style="list-style-type: none"> <li>Curriculum (Standing Item)</li> <li>Parent Engagement (Standing Item)</li> <li>Untargeted Charitable Donations (yearly)</li> </ul>	
OPS. CTE	<ul style="list-style-type: none"> <li>Strat plan: 2h Safe/Healthy Schools (operational)</li> <li>Preliminary Budget Consideration</li> <li>Tentative transportation review</li> </ul>	<ul style="list-style-type: none"> <li>Transportation Review</li> <li>Staffing Timelines</li> <li>Budget - School Allocation Rates</li> </ul>	<ul style="list-style-type: none"> <li>Strat plan: 2i facilities</li> <li>Budget Summary</li> <li>AFG Plan</li> </ul>	<ul style="list-style-type: none"> <li>Capital Plan</li> <li>Joint-Use</li> <li>Auditors</li> <li>Sponsorship Regulation</li> </ul>	<ul style="list-style-type: none"> <li>Emergency Preparedness Update</li> </ul>	
POLICY CTE	<ul style="list-style-type: none"> <li>Corporate Policy</li> </ul>	<ul style="list-style-type: none"> <li>Preamble (funding statement)</li> <li>Role of PACS</li> </ul>			<ul style="list-style-type: none"> <li>Trustee Election Bylaw</li> <li>Role of PAC / DPAC</li> <li><a href="#">Positive language review</a></li> <li><a href="#">References to Strategic Plan</a></li> </ul>	
OTHER	<ul style="list-style-type: none"> <li>Review March Committee Meeting Schedule</li> <li>Draft school calendar in circulation</li> </ul>	<ul style="list-style-type: none"> <li>Superintendent Evaluation Committee</li> <li>TEA Variance Consultations</li> </ul>	<ul style="list-style-type: none"> <li>Student Forum</li> <li>Service Recognition</li> <li>BCSTA AGM</li> <li>South Coast Branch AGM (?)</li> <li>Transportation Consultations</li> <li>Reschedule May Ops to Tues. May 16</li> </ul>	<ul style="list-style-type: none"> <li>Bursary Tea</li> <li>Intergovernmental Meeting (SD46 hosts)</li> <li><a href="#">Transportation Consultations</a></li> </ul>	<ul style="list-style-type: none"> <li>Retirement Celebration</li> <li>Graduations</li> <li>ACE-IT Ceremonies</li> <li><i>Reminder: ST responses to budget submissions</i></li> <li>Superintendent Evaluation Committee</li> </ul>	
Consultations						