

SD No. 46 District Student Leadership Team



Objectives for the DSLT

- Ensure the student voice is present in relevant district discussions
- Discuss important issues for students
- Support the student trustee with information and council.

Our District



Some basics...

- About 3000 students
- 14 Schools
 - 9 Elementary
 - 4 high schools
- Maintenance Department
- Board office in Gibsons

Board of Education



<http://www.sd46.bc.ca/index.php/board>

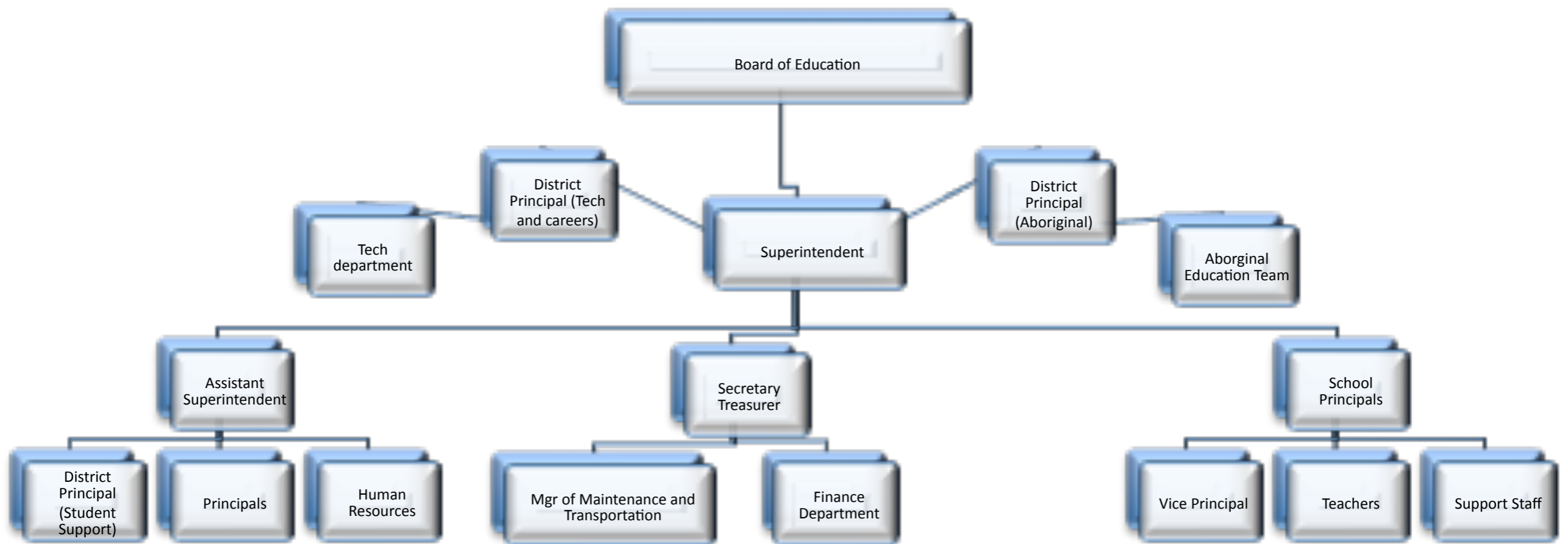
Role of the Board

- Pretty much everything related to education: Through election, they are responsible to the people of the Sunshine Coast for an excellent education.
- Most of the work is delegated to the Superintendent of Schools.

Superintendent

- Responsible to the Board of Education to ensure that their policies and Strategic Plan is carried out.
- Ensures the right staff is in place to do the work.
- Ensure the budget is balanced.

Structure



Student Trustee SD No. 46.



Why?

- We have many sources of information regarding student achievement and social and emotional learning. Do we really need more?
 - Classroom assessment, Completion rates, Satisfaction Surveys, Provincial assessment
 - Regular Senior administration reports.
 - Reports from the superintendent



Hearing our students right now!

- A student voice allows a direct link between the current educational experience of our students and the Board on matters immediately before the Board on an ongoing basis.



What about...

Confidential matters?
Student Trustees are not
members of the elected
Board, and, therefore,
cannot attend closed
meetings.
Everything else is already
public.



What about the elected trustees' responsibilities?.

- Publicly elected officials have a duty to represent based on the electoral process. Should unelected students have a vote?
- The Student Trustee is a voice for direct, ongoing input to the elected Board.
- Voting at Board meetings is the responsibility of the elected trustees only.



Student Trustee Role

- Attend all public meetings of the Board, normally in Gibsons.
- Participate in meetings to represent the student voice.
- Chair the District Student Leadership Team.
- Prepare a written report for the June Board meeting of the experiences as a student trustee for their term of office.



Can the Student Trustee be appointed to committees?

- Yes.
- However, the Chair will ensure that the impact to the Student Trustee's academic career is not negatively impacted by this role. Expectations for the Student Trustee's time commitment need to be limited.



How is the Student Trustee Selected for this role?

- Two students (one grade 11, one grade 12) each from Pender Harbour, Chatelech, Sunshine Coast Alternative and Elphinstone will meet with the Superintendent (anyone else? a Secondary P / VP? A trustee?) every two months to discuss matters of interest to the students.
- A process will be developed amongst this **District Student Leadership Team (DSLTL)** to select the Student Trustee for the following year. The Student Trustee is also Chair of the DLT.

2013 - 2014

- Normally, a grade 11 student would be selected in the Spring by the DLT to be Chair of the DLT and the Student Trustee for the following school year.
- For 2013 - 2014, the Student Trustee would be selected in October amongst the Grade 12 members of the DLT to begin a term from November, 2013.



Student Trustee and the DSL



- A leadership opportunity for secondary students throughout our district through the **District Student Leadership Team (DSL)**.
- An opportunity for direct student input into the Board's discussions and direction.



DSLIT: What now?

- How do we ensure that the DSLIT is working on issues that are important to SD 46 students?
- How do we select one of the grade 12 students from the DSLIT to be a student trustee?
- What are other opportunities for student leadership in our district? (Environmental Lecture,