



**BOARD OF EDUCATION OF
SCHOOL DISTRICT NO. 46 (SUNSHINE COAST)**

OPERATIONS COMMITTEE

AGENDA

May 15, 2014 from 12:30-2:00 p.m.
School Board Office – Gibsons, BC

1. Five Year Capital Plan (discussion)
2. Emergency Response Update
3. Facilities Plan: Gibsons Elementary Projections

School District 46 – EMERGENCY PREPAREDNESS

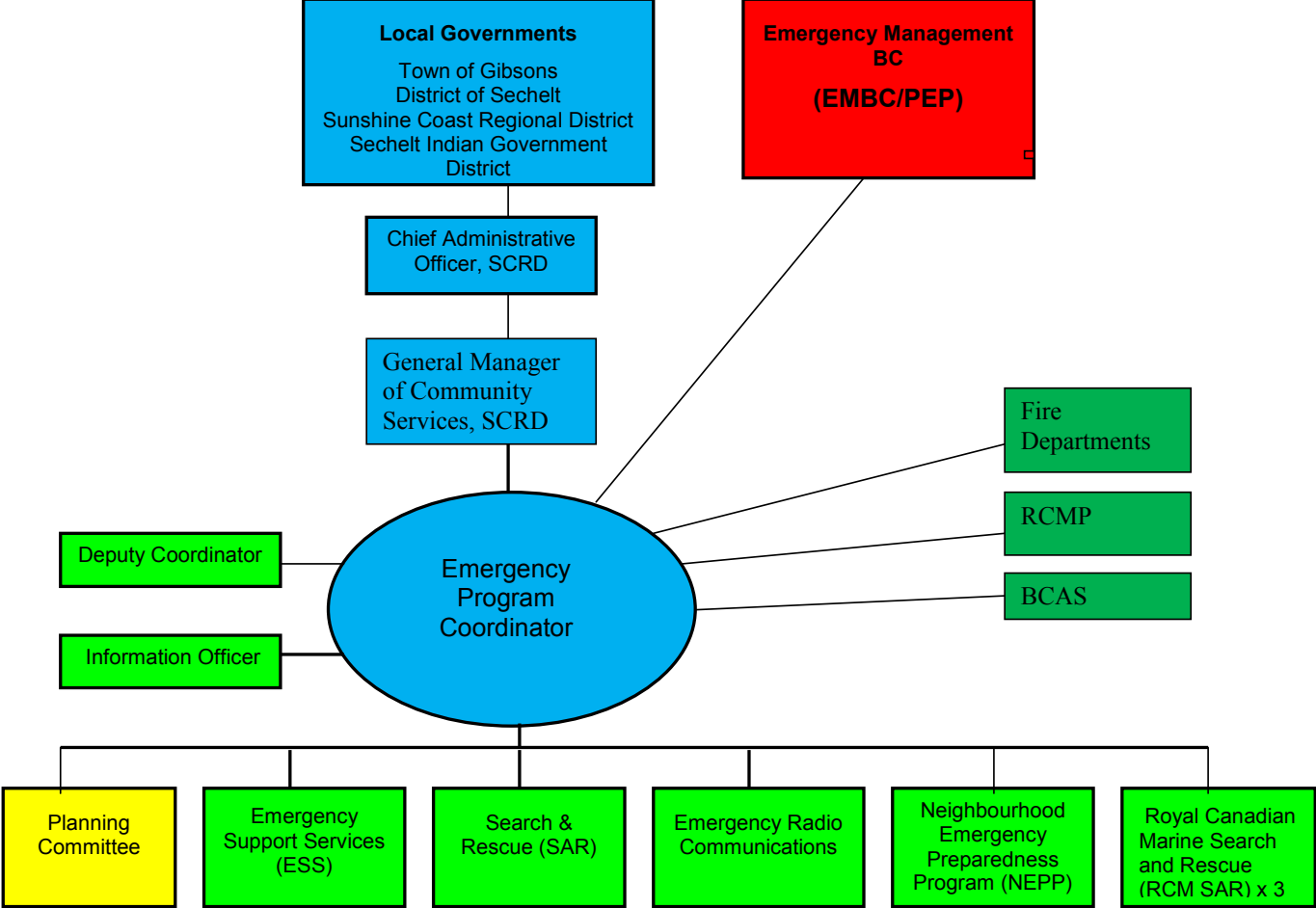
Highlights

- Annual participation in The Great British Columbia ShakeOut (www.shakeoutbc.ca).
- SD 46 Maintenance Staff completed the Rapid Damage Assessment Training.
- Full participation in Sunshine Coast ‘Shake N Bake’ exercise. School District response evaluated by President – Lives Are At Risk. A positive ‘After Action Report / Improvement Plan’ report provided to the School District.
- Completed a ‘Emergency Response Information’ test in Spring/2014.
- Completed inventory and purchase of base level Emergency and First Aid supplies.

Next Steps

- Complete a School District Wide Student Release Drill.
- Replace First Aid supplies that expire (every three years some supplies must be replaced – eg. eye stream, savlon, dressing, etc). Water and energy bars are to be replaced ongoing by the school.
- In partnership with the Sunshine Coast Emergency Program Coordinator, provide education on Personal and Home Emergency Preparedness.
- Expand number of trained ‘Rapid Damage Assessment’ staff.
- Publish flow chart and explanation of School District response plan as an integral part of Sunshine Coast Emergency Program.
- Provide necessary information the SCRD to complete Coast Wide Inventory map.

SUNSHINE COAST EMERGENCY PROGRAM



Created on 09/01/2013 10:27:00 AM

EARTHQUAKE PREPAREDNESS:



BEFORE, DURING and AFTER

Earthquakes are common in BC and more than 1,200 are recorded each year across the province.

The coast of BC is considered to be a high-risk earthquake zone. In this region, tectonic plates are moving apart, sliding past one another and colliding. It is the movement of these plates that causes small earthquakes (daily), potentially damaging earthquakes (decades apart), and some of the world's largest earthquakes (centuries apart).

Earthquakes strike without warning, so it is important to act now to get prepared.

Before the Shaking Starts

Prepare Your Family

- Know the safe spots in each room— against inside walls, under sturdy tables, desks or archways.
- Know the danger spots— windows, mirrors, hanging objects, fireplaces and tall, unsecured furniture.
- Practice family drills. Physically place yourself in safe locations. This is especially important for children.
- Learn first aid and CPR.
- Keep a listing of emergency numbers.
- Prepare a family emergency kit with supplies for at least 72 hours.

Prepare Your Home

- Learn how to shut off gas, water and electricity.
- Keep breakables or heavy objects on bottom shelves.
- Secure tall heavy furniture which could topple, such as bookcases, china cabinets or wall units.
- Secure the water heater and appliances.
- Secure hanging plants and heavy picture frames or mirrors (especially over beds).
- Put latches on cabinet doors to hold closed during shaking.
- Keep flammable or hazardous liquids such as paints, pest sprays or cleaning products in the garage or outside shed.
- Check chimneys, roofs, walls, foundations for structural condition.

- Maintain emergency food, water and other supplies, including flashlight, a portable battery-operated radio, extra batteries, medicines, first aid kit and clothing.

During the Shaking

- If indoors, stay there. Drop, cover and hold. Get under a desk or table and hang on. Alternately, you can stand in an archway or corner.
- If outdoors, get into an open area away from trees, buildings, walls and power lines.
- If in a high-rise building, stay away from windows and outside walls. Get under a table. Do not use the elevators.
- If driving, pull your car to the side of the road and stop. Avoid overpasses or power lines. Remain inside until the shaking is over.
- If in a crowded public place, do not rush for the doors. Move away from display shelves containing objects that may fall.
- In all instances, drop, cover and hold; protect your head as much as possible.

After the Shaking Stops

- Stay calm and check for injuries. Apply first aid if qualified. Do not move any seriously injured individuals unless they are in immediate danger.
- Check for fires, gas and water leaks and damaged electrical wiring or sewer lines.
- If you smell gas, do not use matches, candles, etc. and do not operate electrical switches.
- Check building for cracks and damage, including roof, chimneys and foundation. If you suspect there is serious damage, turn off all utilities and leave the building.
- Check food and water supplies. Emergency water may be obtained from water heaters, melted ice cubes, toilet tanks and canned vegetables.
- Seek sources of uncontaminated water. In an emergency, purify water by straining through a paper towel or several layers of clean cloth and by boiling vigorously for at least six minutes.
- Do not use BBQ's, camp stoves or unvented heaters indoors.
- Do not flush toilet if sewer line is damaged.
- Do not use the telephone unless there is a severe injury or fire to report.
- Turn on your portable radio for instructions and news reports, and cooperate fully with public safety officials.
- Keep Disaster Response Routes clear for emergency vehicles.
- Be prepared for aftershocks.

Movement of the ground is seldom the actual cause of death or injury. Most casualties result from partial building collapse, falling objects and debris, like toppling chimneys, ceiling plaster and light fixtures.

Remember – Stay calm and lend a hand to others in need.

Go to the [EMBC website](#) for more information on personal emergency preparedness.

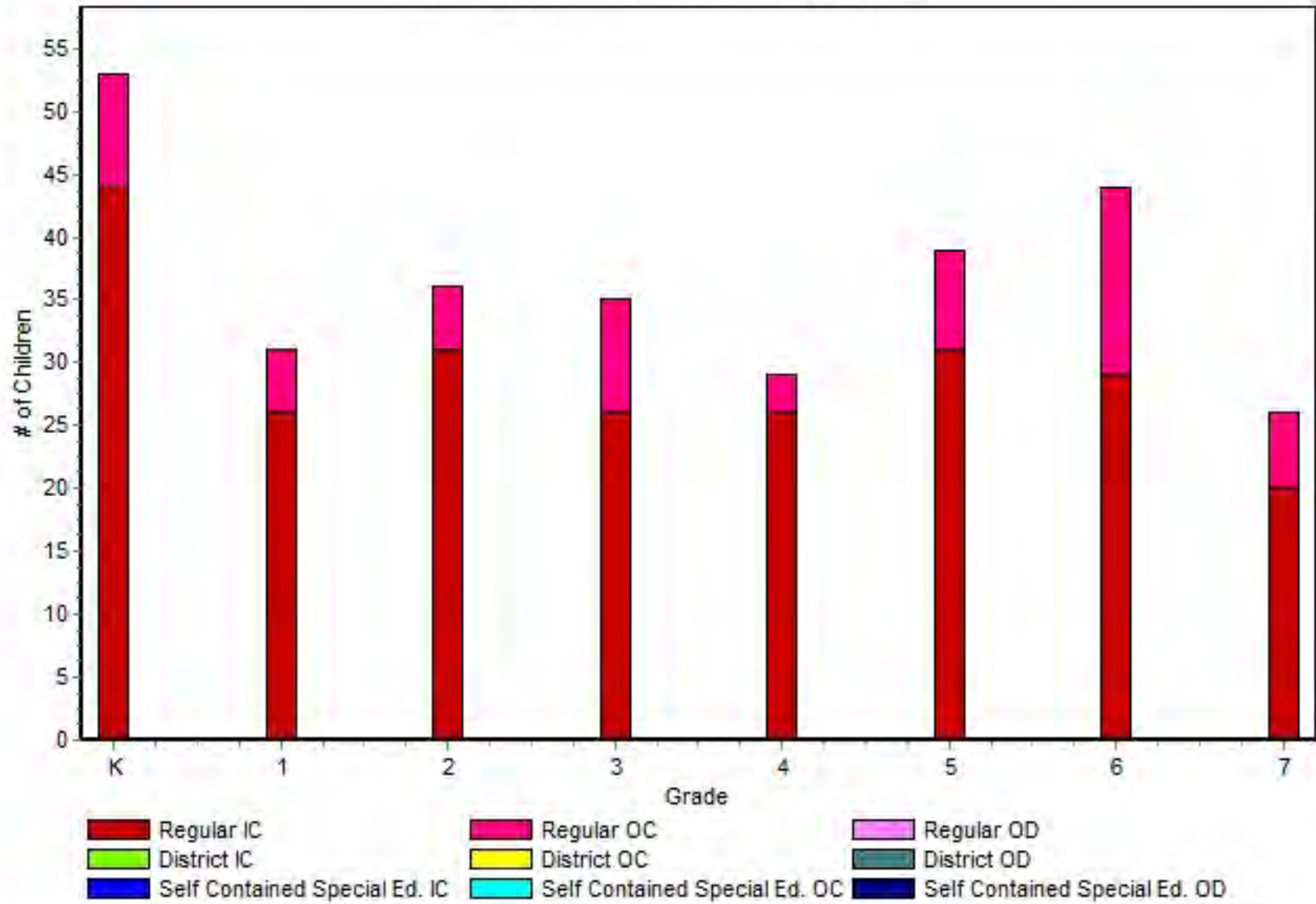
Enrolment Projection: Baragar assumptions without local knowledge

Sunshine Coast School District
Gibsons Elementary

A Projection of Total Enrolment: Regular

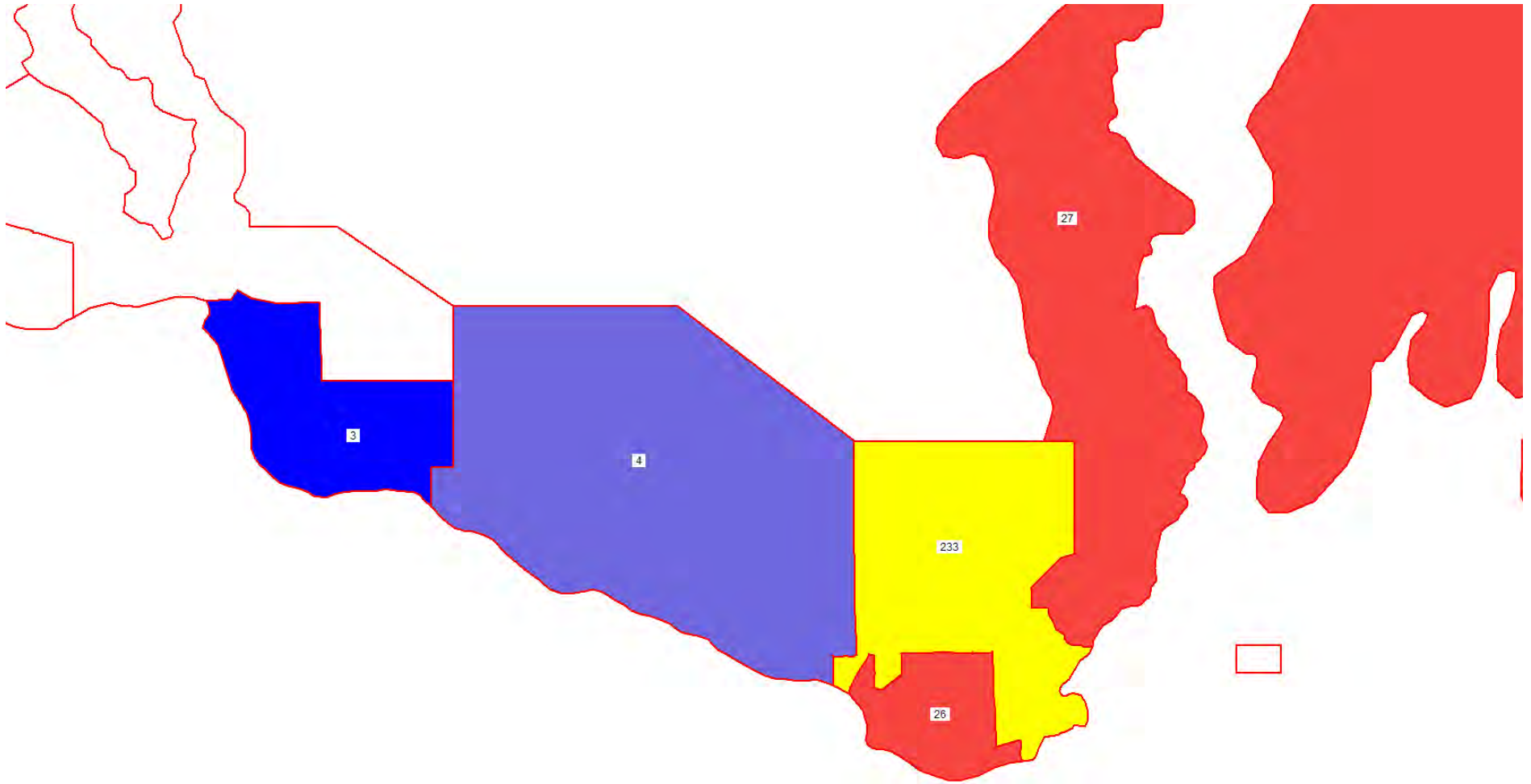
Grade	2009	2010	2011	2012	2013	2014	2015	2016	2017	2018	2019	2020	2021	2022	2023	2024	2025	2026	2027	2028
K	32	37	40	33	53	38	37	41	35	38	38	39	40	40	41	41	41	42	42	43
1	37	31	33	39	31	52	36	36	39	34	37	37	38	39	39	39	40	40	41	41
2	45	38	33	31	36	27	47	33	33	36	31	34	35	35	35	35	36	37	37	37
3	21	42	40	28	35	37	28	47	34	34	37	32	35	35	35	36	36	37	37	37
4	39	25	41	41	29	36	38	29	50	35	35	38	33	36	37	37	38	38	38	39
5	28	36	25	40	39	27	35	36	27	47	34	33	37	32	34	35	36	36	36	37
6	44	32	38	26	44	42	30	38	39	31	51	37	36	40	35	38	38	39	39	39
7	47	48	31	42	26	45	43	31	38	40	31	52	38	37	40	35	39	39	39	40
1 to 3	103	111	106	98	102	116	111	116	106	104	105	103	108	109	109	110	112	114	115	115
4 to 7	158	141	135	149	138	150	146	134	154	153	151	160	144	145	146	145	151	152	152	155
1 to 7	261	252	241	247	240	266	257	250	260	257	256	263	252	254	255	255	263	266	267	270
K to 7	293	289	281	280	293	304	294	291	295	295	294	302	292	294	296	296	304	308	309	313
Total	293	289	281	280	293	304	294	291	295	295	294	302	292	294	296	296	304	308	309	313

Who Attends Gibsons Elementary(2013)



Gibsons Elementary

This map depicts the residential address of Gibsons Elementary students.



Pupils Counts by Grade of Where Pupils Attending Gibsons Elem. Live

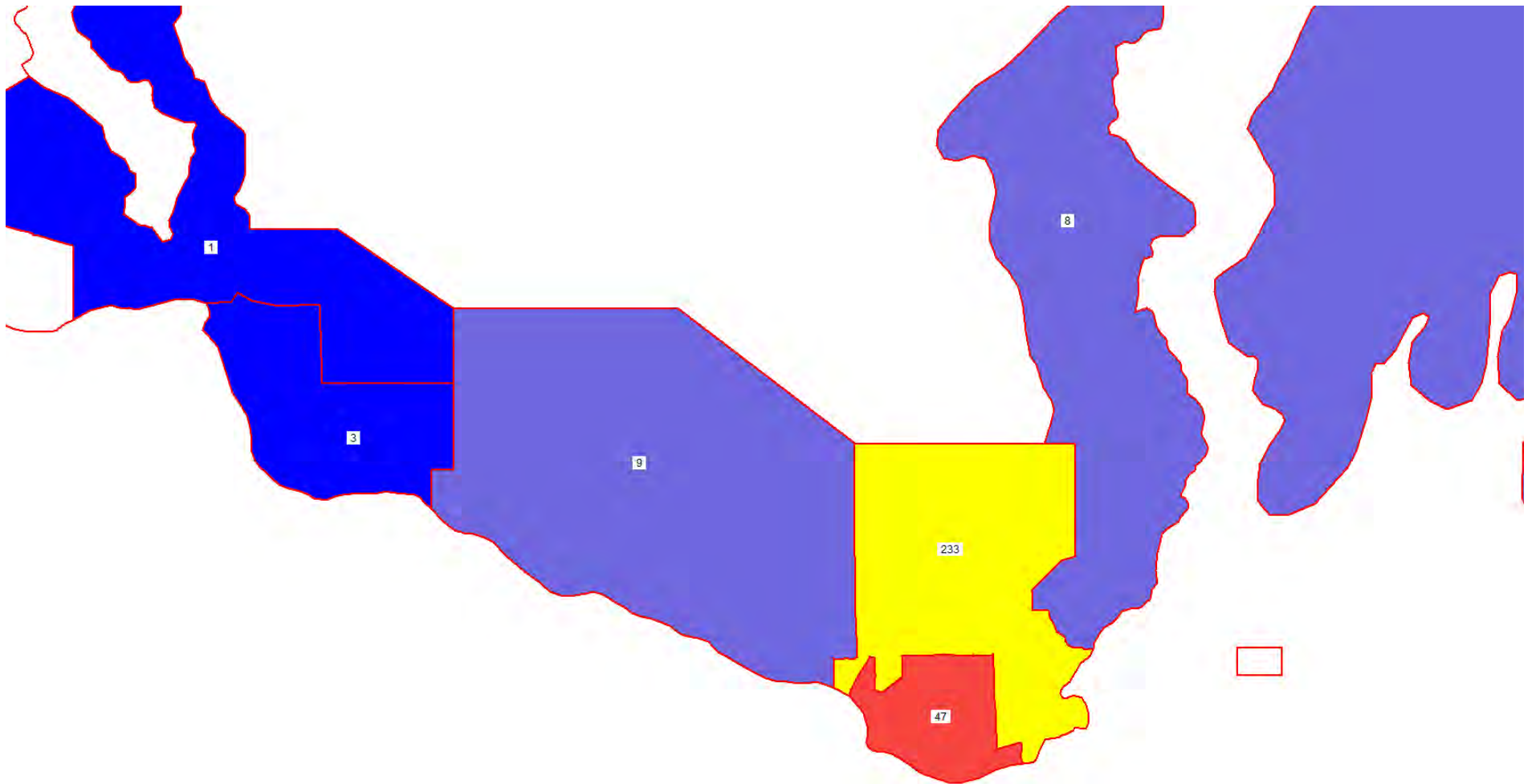
School of Attendance: Gibsons Elem.

Program: Regular

School of Residence	Enrolment								Subtotals			
	K	1	2	3	4	5	6	7	K-3	4-7	K-7	8-12
Gibsons Elem.	44	26	31	26	26	31	29	20	127	106	233	0
Langdale Elem.	1	3	1	7	1	3	8	3	12	15	27	0
Cedar Grove Elem.	7	1	3	2	2	3	6	2	13	13	26	0
Roberts Creek Elem.	0	0	1	0	0	2	0	1	1	3	4	0
Davis Bay Elem.	1	1	0	0	0	0	1	0	2	1	3	0
Total by Grade	53	31	36	35	29	39	44	26	155	138	293	0

Gibsons Elementary

This map depicts Gibsons residents who attend schools in other areas.



Pupils Counts by Grade of Where Gibsons Elem. Catchment Area Residents Attend

Catchment Area of Residence: Gibsons Elem.

Program: Regular

School of Attendance	Enrolment								Subtotals			
	K	1	2	3	4	5	6	7	K-3	4-7	K-7	8-12
Gibsons Elem.	44	26	31	26	26	31	29	20	127	106	233	0
Cedar Grove Elem.	4	6	9	6	9	3	6	4	25	22	47	0
Roberts Creek Elem.	1	0	0	0	0	1	5	2	1	8	9	0
Langdale Elem.	0	0	1	0	2	3	1	1	1	7	8	0
Davis Bay Elem.	1	0	0	0	2	0	0	0	1	2	3	0
Kinnikinnick Elem.	0	0	1	0	0	0	0	0	1	0	1	0
Total by Grade	50	32	42	32	39	38	41	27	156	145	301	0

2014/15 Enrolment for Gibsons Elementary

School	KF	01	02	03	04	05	06	07	HS	Total
Gibsons Elementary	37	52	34	39	35	30	40	46		313
District Totals	37	52	34	39	35	30	40	46		313

COMING TO GIBSONS

GR	HM SC	REQ SCHOOL
K	DBE	GES
K	LES	GES
K	CGE	GES
K	LES	GES

LEAVING GIBSONS

GR	HM SC	REQ SCHOOL
K	GES	CGE
K	GES	CGE
k	GES	CGE
K	GES	RCE